

GREATER PORTLAND METRO

Transit Service to Casco Bay Lines

May 27, 2026

Presented by:

Mike Tremblay

Director of Transit Development



Route 8

June Service Changes

Route 8 Service in Old Port

- Route runs counter-clockwise from Congress to Temple, Middle, Franklin, Maine State Pier, Commercial, India, Congress
- Casco Bay Lines stop moved in 2022 to improve travel time for buses and thru passengers
- Service runs:
 - Weekdays ~6:40am-6pm, every 30 min
 - Saturdays ~8am-6pm, every hour
 - Sundays ~9am-6pm, every hour

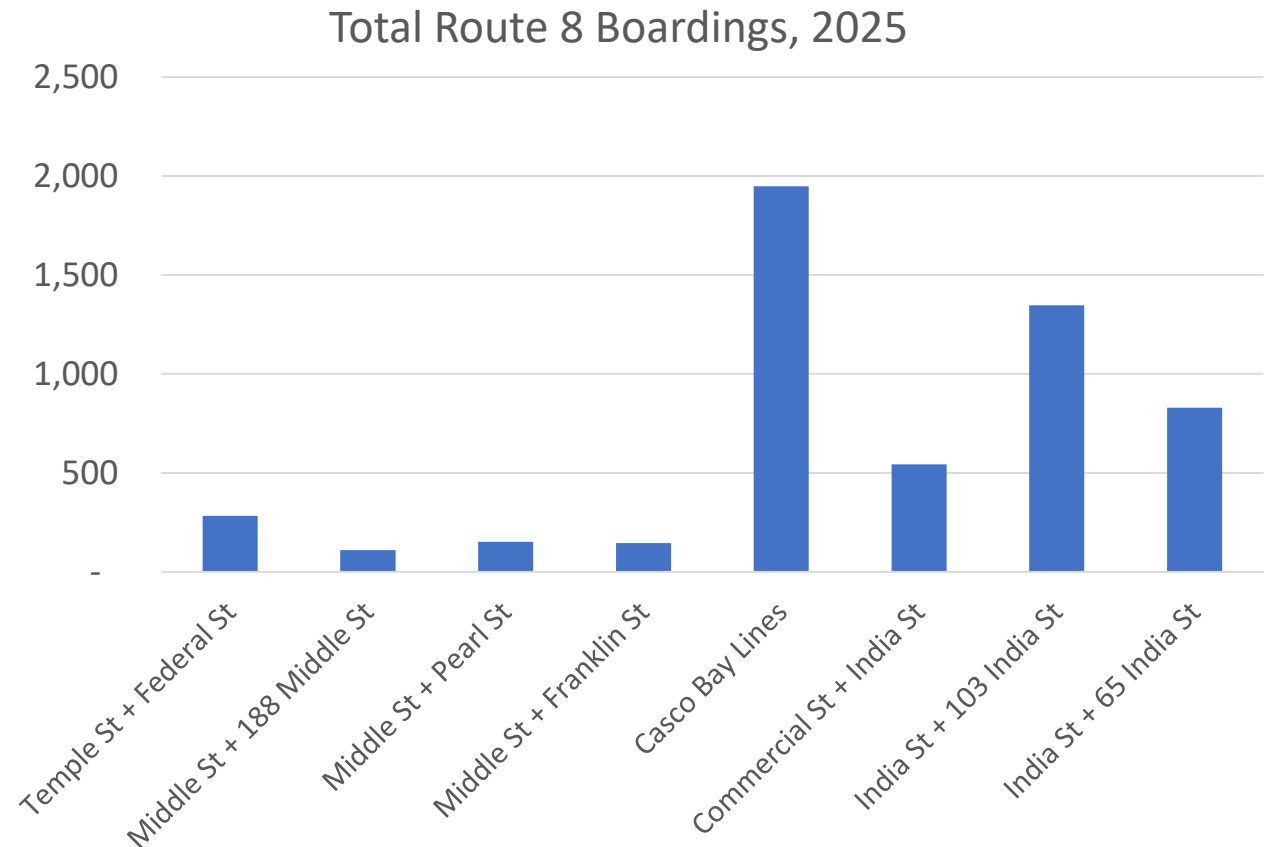


Route 8

June Service Changes

Existing Route 8 Service in Old Port

- Route runs counter-clockwise from Congress to Temple, Middle, Franklin, Maine State Pier, Commercial, India, Congress
- Casco Bay Lines stop moved in 2022 to improve travel time for buses and thru passengers
- Ridership is low at stops between Monument Square and Casco Bay Lines
 - Poor accessibility
 - Little added coverage

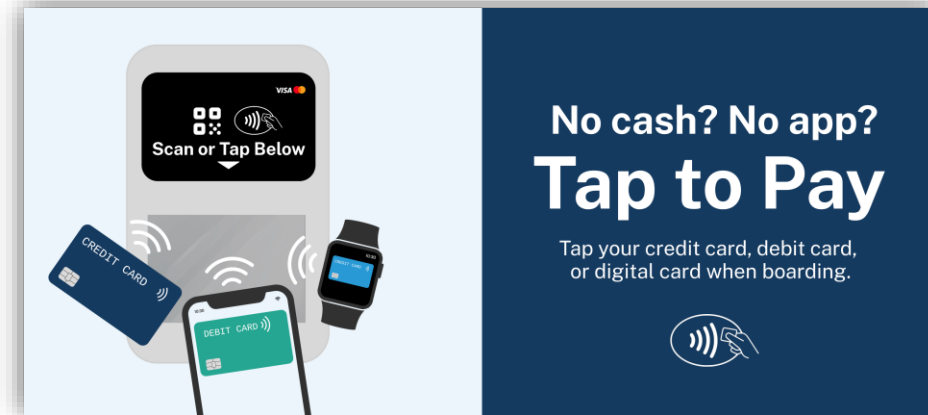


Route 8

June Service Changes

Other Developments

- Coming soon to Metro: Tap to Pay
 - Direct credit card payments on-board
 - Ideal for tourists, visitors, and infrequent riders
 - No need to download an app, pick up a card, or carry cash
- GPCOG Safe Streets for All pilot
 - Pilot safe-streets improvements running from late-June thru early November on Commercial Street
 - Improved access and safety to new bus stops

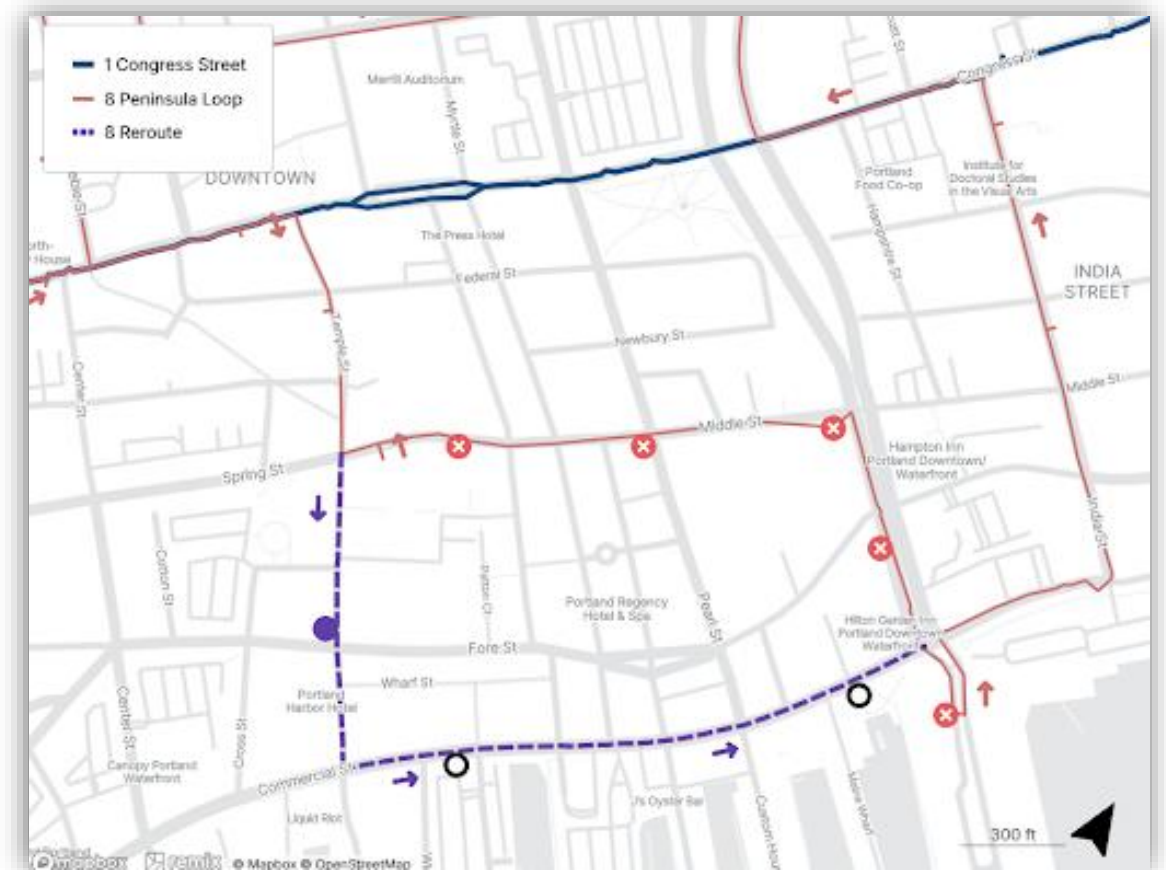


Route 8

June Service Changes

Planned Route 8 Changes

- Effective June 21, 2026
- Temporary adjustment to Line 8 routing in the area of Casco Bay Lines.
 - Improved circulation/access to Commercial Street
 - Better travel time for thru passengers
 - On-time performance (OTP)
 - Possible permanent change based on results



Route 8

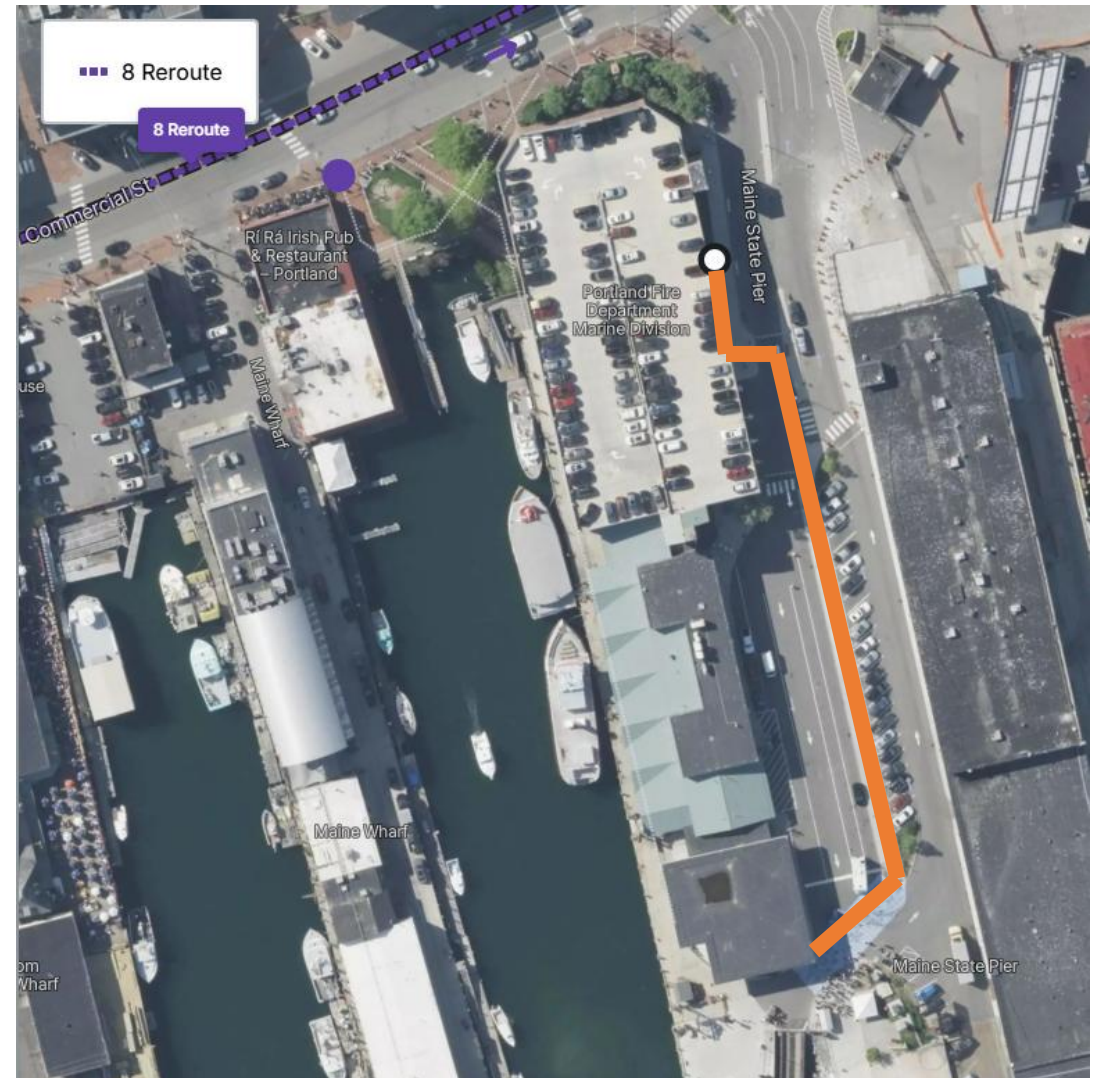
June Service Changes

How does this change access?

Before

- Walk along Maine State Pier driveway
- Requires three crossings

- Approximately 500 feet from terminal (1/10 mile)



Route 8

June Service Changes

How does this change access?

After

- More straightforward walk to stop at Bell Buoy Park
 - Covered access way along Maine Wharf
 - Benches
- Approximately 650 feet from terminal (1/8 mile)

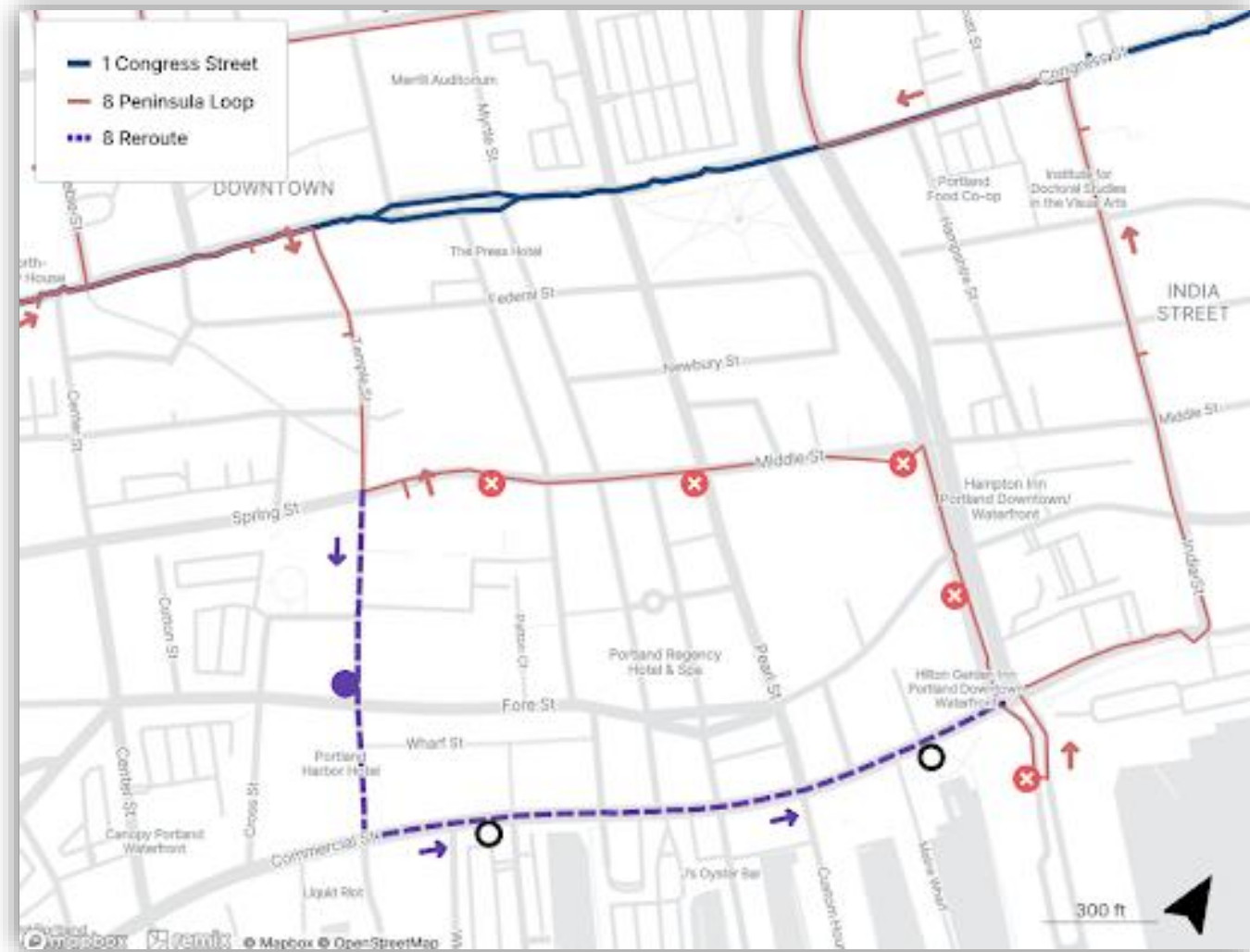


Route 8

June Service Changes

Schedule and Next Steps

- June 21: Implementation
- July-September:
 - Monitor KPIs
 - Ridership
 - On-time performance
 - Market route change and Tap-to-Pay along Commercial Street
 - Adjust route if needed
- October/November
 - Determine to revert or make change permanent



Route 8

June Service Changes

Other Considerations – Funding and Fleet Dependent

- Span of Service
- Bi-directionality
- Frequency on weekends
- Synergy with Route 1

MONDAY THROUGH FRIDAY
PENINSULA LOOP TO CASCO BAY LINES

Hannaford Plaza A	Congress & Forest B	Bramhall St Maine Medical C	Monument Square D	Casco Bay Lines E	Franklin Towers F	Whole Foods G	Hannaford Plaza A
...	6:40
...	6:50	6:55	7:05
...	6:44	6:50	7:02	7:10	7:17	7:25	7:35
7:05	7:11	7:20	7:32	7:40	7:47	7:55	8:05
7:35	7:41	7:50	8:02	8:10	8:17	8:25	8:35
8:05	8:11	8:20	8:32	8:40	8:47	8:55	9:05
8:35	8:41	8:50	9:02	9:10	9:17	9:25	9:35
9:05	9:11	9:20	9:32	9:40	9:47	9:55	10:05
9:35	9:41	9:50	10:02	10:10	10:17	10:25	10:35
10:05	10:11	10:20	10:32	10:40	10:47	10:55	11:05
10:35	10:41	10:50	11:02	11:10	11:17	11:25	11:35
11:05	11:11	11:20	11:32	11:40	11:47	11:55	12:05
11:35	11:41	11:50	12:05	12:14	12:22	12:30	12:40
12:05	12:11	12:20	12:35	12:44	12:52	1:00	1:10
12:40	12:46	12:55	1:10	1:19	1:27	1:35	1:45
1:10	1:16	1:25	1:40	1:49	1:57	2:05	2:15
1:45	1:51	2:00	2:15	2:24	2:32	2:40	2:50
2:15	2:21	2:30	2:45	2:54	3:02	3:10	3:20
2:50	2:56	3:05	3:20	3:29	3:37	3:45	3:55
3:20	3:26	3:35	3:50	3:59	4:07	4:15	4:25
3:55	4:01	4:10	4:25	4:34	4:42	4:50	5:00
4:25	4:31	4:40	4:55	5:04	5:12	5:20	5:30
5:00	5:06	5:15	5:30	5:39	5:47	5:55	6:00
5:30	5:36	5:45	6:00	6:09	6:15
6:00	6:05

SUNDAY
PENINSULA LOOP TO CASCO BAY LINES

Hannaford Plaza A	Congress & Forest B	Bramhall St Maine Medical C	Monument Square D	Casco Bay Lines E	Franklin Towers F	Whole Foods G	Hannaford Plaza A
...	...	8:50	9:02	9:10	9:17	9:25	9:35
9:35	9:40	9:50	10:02	10:10	10:17	10:25	10:35
10:35	10:40	10:50	11:02	11:10	11:17	11:25	11:35
11:35	11:40	11:50	12:02	12:10	12:17	12:25	12:35
12:35	12:40	12:50	1:02	1:10	1:17	1:25	1:35
1:35	1:40	1:50	2:02	2:10	2:17	2:25	2:35
2:35	2:40	2:50	3:02	3:10	3:17	3:25	3:35
3:35	3:40	3:50	4:02	4:10	4:17

SATURDAY
PENINSULA LOOP TO CASCO BAY LINES

Hannaford Plaza A	Congress & Forest B	Bramhall St Maine Medical C	Monument Square D	Casco Bay Lines E	Franklin Towers F	Whole Foods G	Hannaford Plaza A
...	...	7:50	8:02	8:10	8:17	8:25	8:35
8:35	8:40	8:50	9:02	9:10	9:17	9:25	9:35
9:35	9:40	9:50	10:02	10:10	10:17	10:25	10:35
10:35	10:40	10:50	11:02	11:10	11:17	11:25	11:35
11:35	11:40	11:50	12:02	12:10	12:17	12:25	12:35
12:35	12:40	12:50	1:02	1:10	1:17	1:25	1:35
1:35	1:40	1:50	2:02	2:10	2:17	2:25	2:35
2:35	2:40	2:50	3:02	3:10	3:17	3:25	3:35
3:35	3:40	3:50	4:02	4:10	4:17	4:25	4:35
4:35	4:40	4:50	5:02	5:10	5:17	5:25	5:35
5:35	5:40	5:50	6:02	6:10	6:17

Thank You!

Mike Tremblay, P.E.
Director of Transit Development
planning@gpmetro.org
207-517-3023

